

ECHOGRAPHE CHISON i3 CHISON i3 ULTRASOUND

Réf. : IM18030

- Ecran 19" LCD, 4 connecteurs de sonde
- Technologies 4D avancées
- Superbe image: imagerie composée, SRA, i-Image
- Etude obstétricale et gynécologique complète
- Flux de travail simplifié
- Système d'archivage "EasyView"
- DICOM 3.0 (option), imprimante, PC et vidéo

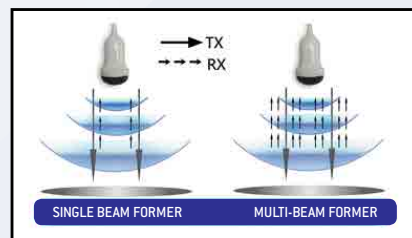
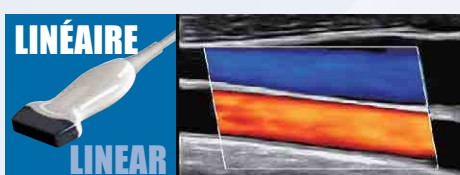
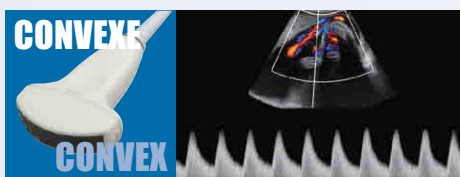
- 19" LCD, 4 probe connectors
- Advanced 4D technologies
- Great image: compound imaging, SRA, i-Image
- Great Comprehensive obstetric and gynecological package
- Streamlined workflow
- EasyView archive system
- DICOM 3.0 (option), PC & video printer
- Great value for OB & GYN, general purpose



**CONFIGURATION
 IDEALE POUR
 GYNECOLOGIE
 OBSTETRIQUE**

**IDEAL
 CONFIGURATION FOR
 GYNECOLOGY
 OBSTETRICS**

CONFIGURATION STANDARD STANDARD CONFIGURATION



- Amélioration de la vitesse de traitement du signal
- Amélioration de la résolution temporelle
- Amélioration de la résolution spatiale

- Enhance signal processing speed
- Enhance time resolution
- Improve spatial resolution